



NYSPI Mac Encryption

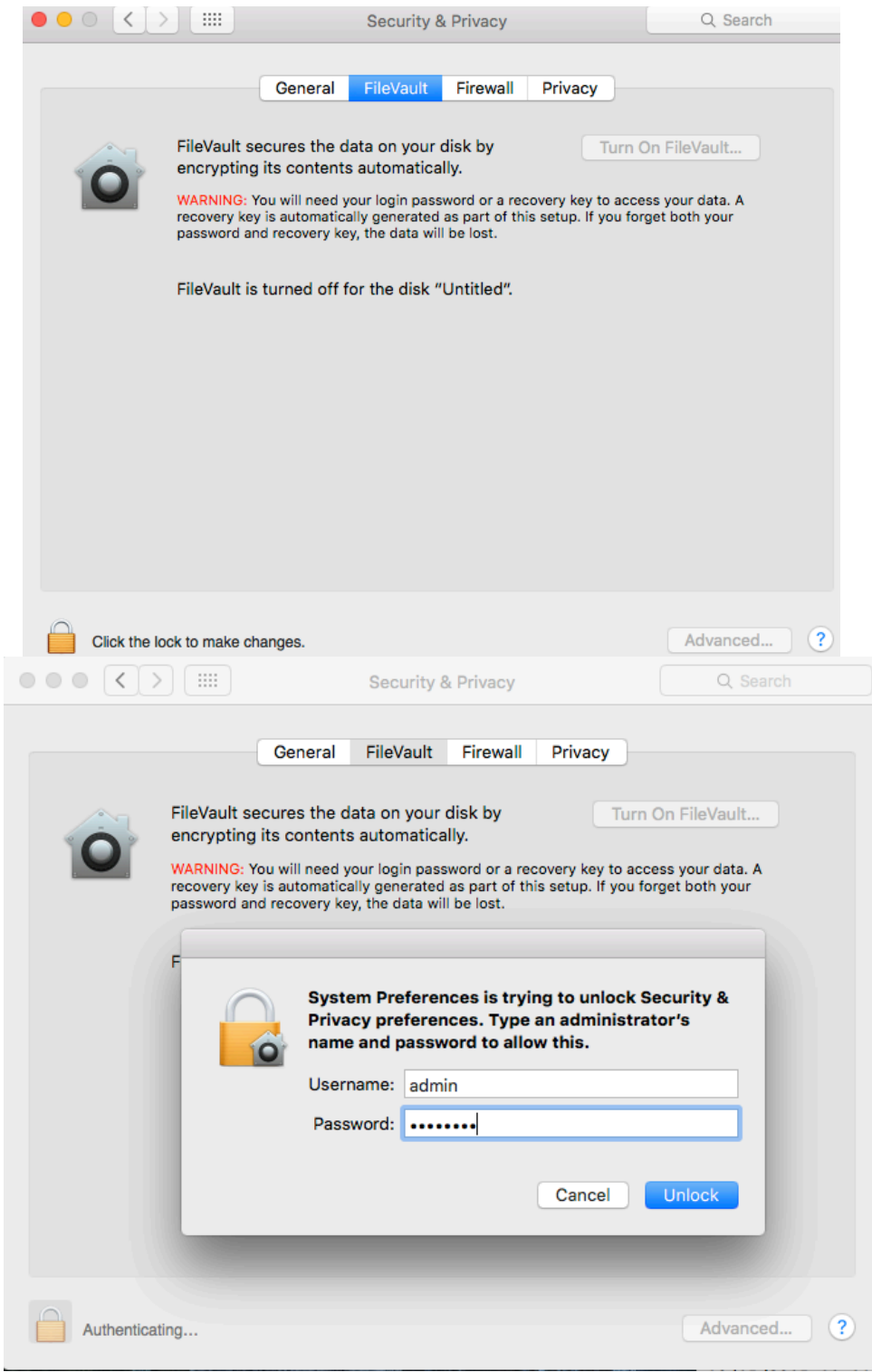
NYSPI Endpoints, including Apple Mac workstations and laptops, must be encrypted to support NYS and CUMC requirements. Details can be found at <http://psyit.columbia.edu> or in the NYS Encryption Standard at <http://on.ny.gov/2bSYU3T>.

Apple Mac systems can be encrypted using the native FileVault2 solution, as documented at <https://support.apple.com/en-us/HT204837>

At NYSPI, use of recovery-keys, rather than iCloud, may be appropriate for NYSPI-owned and/or managed devices which would be less tightly connected with an individual user. For example, if recovery of the system would be required when an individual user leaves NYSPI service, recovery-keys would be required.

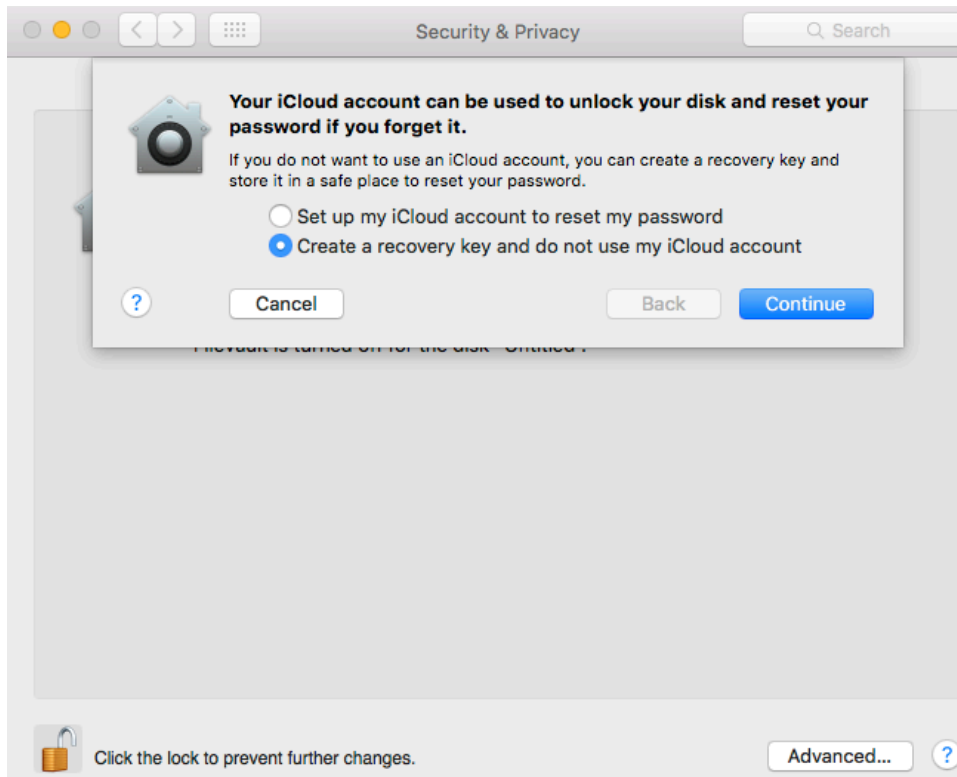
To encrypt a Mac device

1. Choose Apple menu (🍏) > System Preferences, then click Security & Privacy.
2. Click the FileVault tab.
3. Click the Lock Icon at the left bottom



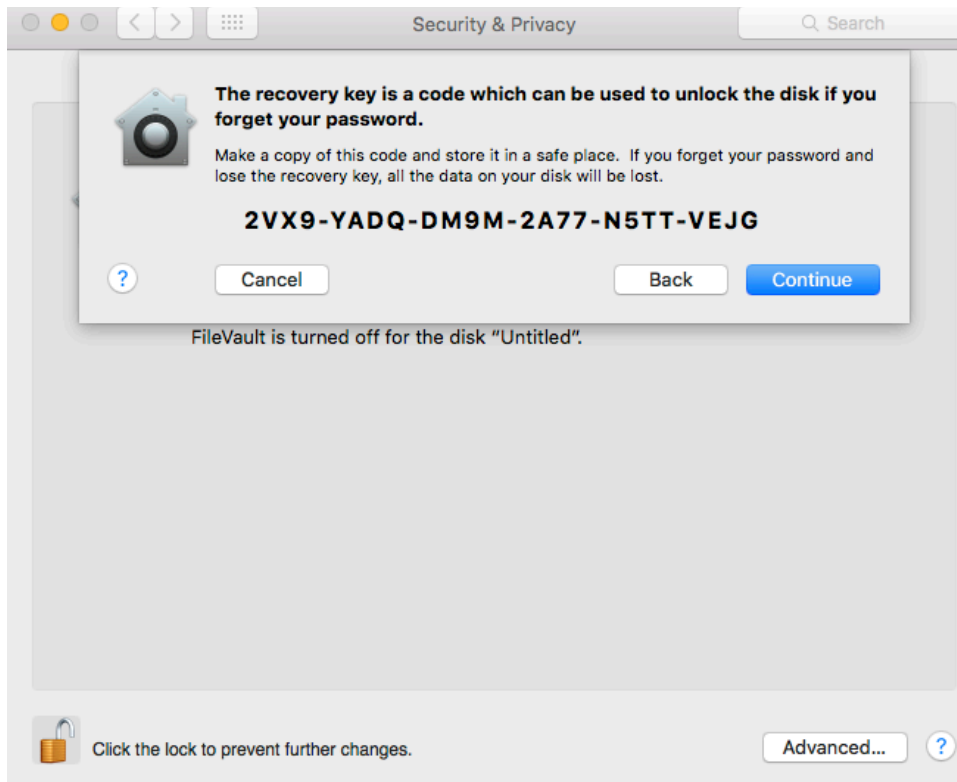
4. Enter the Mac administrator user name and password (individual users may not, and in many cases should not, have administrative access.)

5. Choose “Create a recovery key and do not use my iCloud account”, then click Continue

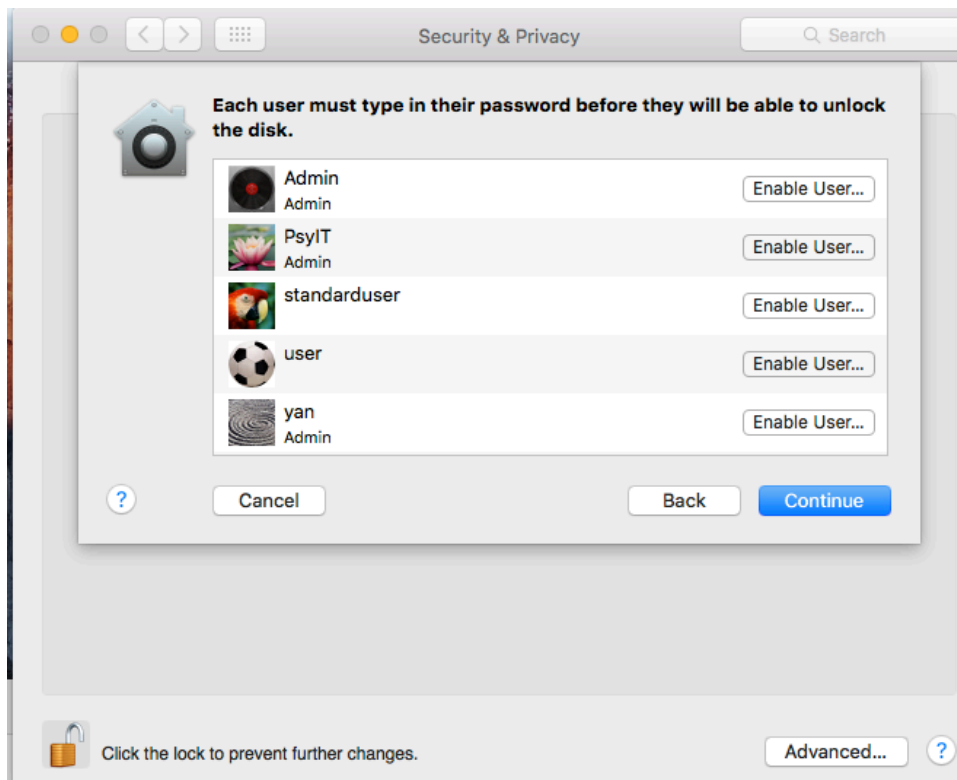


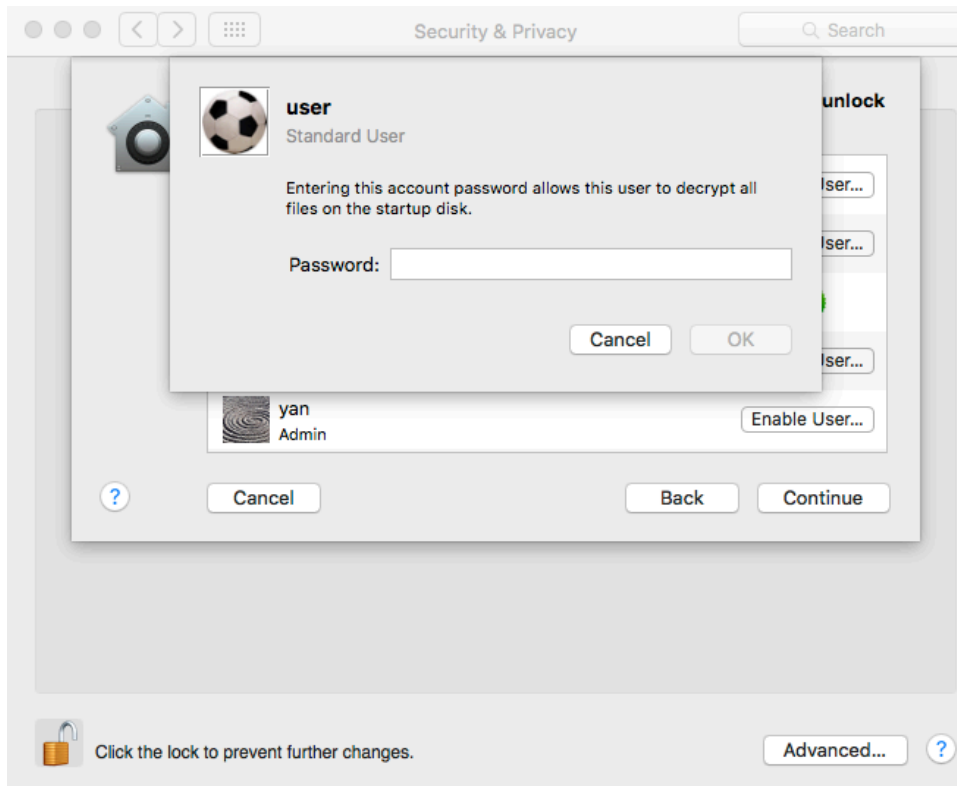
6. Record the recovery key and store securely.

IMPORTANT: YOU MUST RECORD THE FILEVAULT RECOVERY KEY BEFORE CLICKING CONTINUE. SAVE THE FILE OF THE RECOVERY KEY PIC TO A PLACE WHERE YOU CAN ACCESS TO IT. (DON'T SAVE THE FILE IN THE ENCRYPTED MAC COMPUTER ITSELF) AND IF YOU HAVE MULTIPLE MAC DEVICES, MAKE SURE YOU HAVE THE RECOVERY KEYS TO MATCH MACS' SERIAL NUMBER RESPECTIVELY. IF YOU LOSE THE RECOVERY KEY, THERE IS NO WAY YOU CAN ACCESS TO THE SYSTEM OR THE HARD DRIVE IF YOU FORGET YOUR PASSWORD OR THE SYSTEM FAILS TO BOOT.

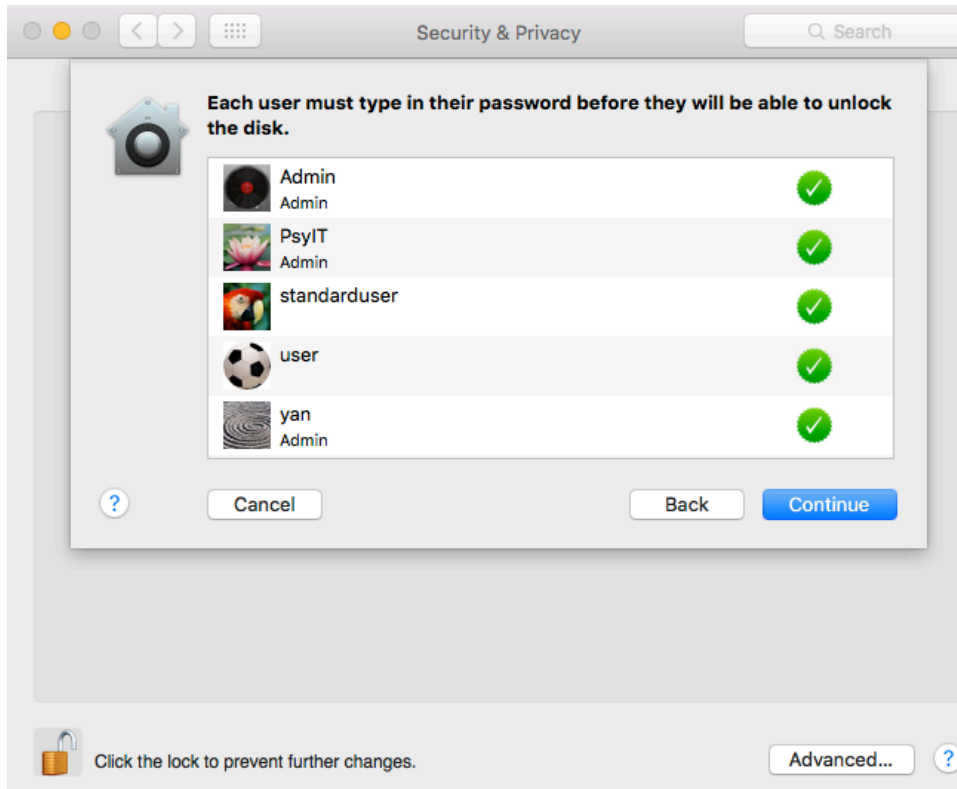


7. Repeat for each user on the the Mac computer.

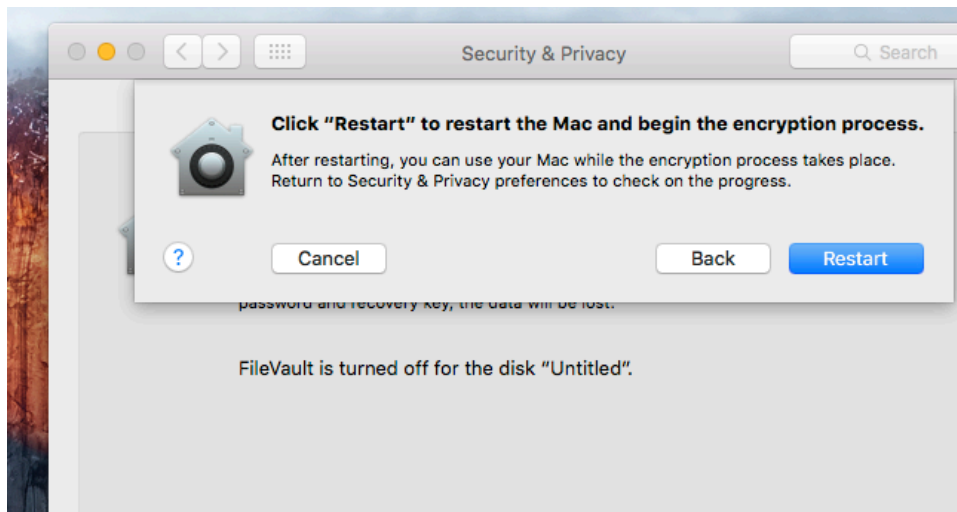




8. After enabling all user accounts, then Click Continue



9. Click Restart



Questions on this process can be sent via a service desk ticket e-mail to PsyIT@nyspi.columbia.edu